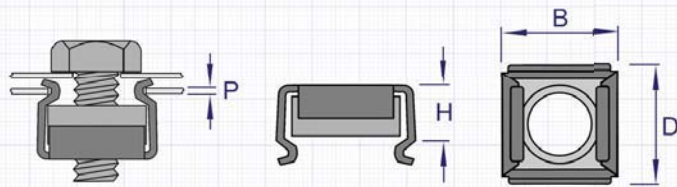


# CAGE NUT



visit: [www.npfasteners.com/cnb.shtml](http://www.npfasteners.com/cnb.shtml)



**TYPE  
CNB**

## SPECIFICATION

OTHER SPRING STEEL FASTENERS AVAILABLE, PLEASE CALL FOR DETAILS.

Thread and Pitch	Code	Panel Range (P)	Hole Size in Panel	H	B	D
M4 x 0.7	1	0.7 - 1.6	9.5	5.8	13.5	13.5
	2	1.8 - 2.6	9.5	5.8	13.5	13.5
M5 x 0.8	1	0.7 - 1.6	9.5	5.8	13.5	13.5
	2	1.8 - 2.6	9.5	5.8	13.5	13.5
	3	2.1 - 3.0	9.5	6.0	13.5	13.5
M6 x 1.0	1	0.7 - 1.6	9.5	5.8	13.5	13.5
	2	1.8 - 2.6	9.5	5.8	13.5	13.5
	3	2.1 - 3.0	9.5	6.0	13.5	13.5
M8 x 1.25	1	0.7 - 1.6	12.8	7.2	18.0	17.8
	2	1.8 - 2.6	12.8	7.2	18.0	17.8
	3	2.1 - 3.0	12.8	7.4	18.0	17.8
M10 x 1.5	1	0.7 - 1.6	12.8	7.2	18.0	17.8
	2	1.8 - 2.6	12.8	7.2	18.0	17.8
	3	2.1 - 3.0	12.8	7.4	18.0	17.8

## INFORMATION

### MATERIALS

Zinc Trivalent  
Passivate (ZC).

### FINISHES

Nut - Carbon Steel,  
Cage - Spring Steel,  
Also available in Stainless Steel (A2).

### PART NUMBER EXAMPLE

Type / Thread / Code / Finish =  
CNB - M6 - 2 - ZC  
(Cage Nut Type B, M6, 1.8-2.6 Panel, Steel Zinc)

# BLIND RIVETS



## INFORMATION

Blind Rivets (often referred to as "Breakstem Rivets") allow two or more components to be joined together from one side of the application.

Available in a combination of head styles, diameters, grip-ranges and materials, blind rivets are highly versatile and are a cost effective, industry proven joining method.

Installation is simple, with tooling ranging from cheap pistol-grip style guns to air-powered tooling suitable for production line work.

Applications include, automotive, aerospace, furniture, restoration, sheet metal fabrication etc.

**For detailed installation guides and performance data visit [www.npfasteners.com](http://www.npfasteners.com)**